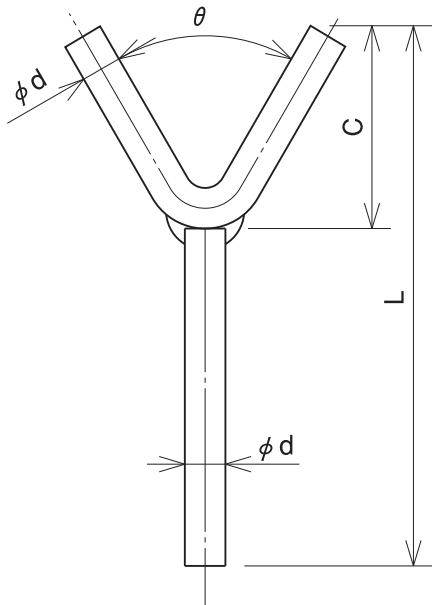
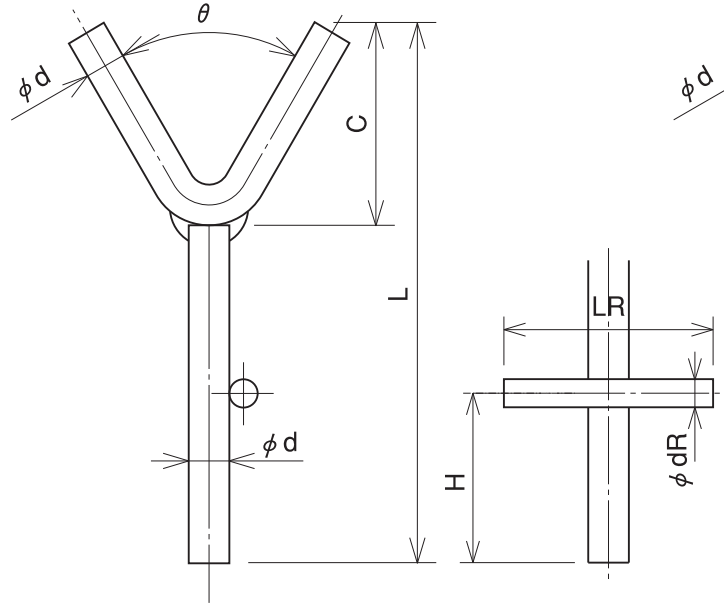


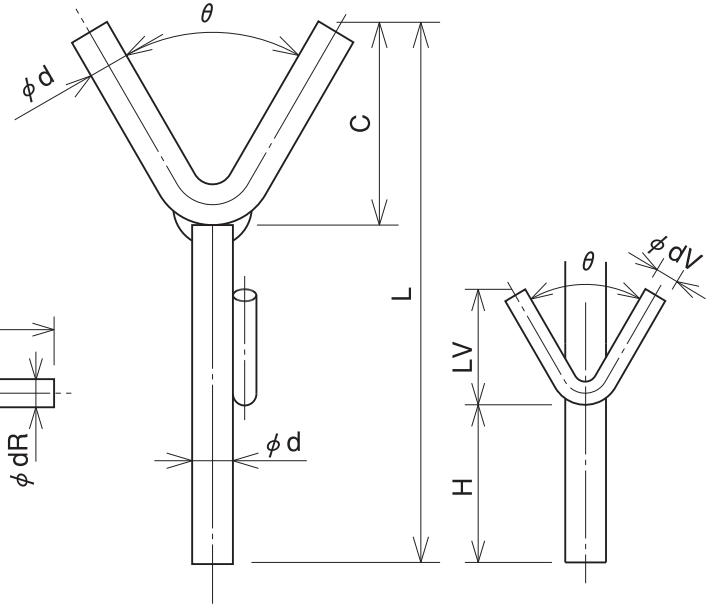
YM2A



YM2AR



YM2AV



YM2A	Type indication	θ -YM2A- ϕd -C-L
YM2AF	Type indication	θ -YM2AF- ϕd -C-L

YM2AR	Type indication	θ -YM2AR- ϕd -C-L- ϕdR -LR-H
YM2ARF	Type indication	θ -YM2ARF- ϕd -C-L- ϕdR -LR-H

YM2AV	Type indication	θ -YM2AV- ϕd -C-L- θ - ϕdV -LV-H
YM2AVF	Type indication	θ -YM2AVF- ϕd -C-L- θ - ϕdV -LV-H

Example of description: 60-YM2AF-10-50-100...

The "F" at the end of each product name indicates flux processing of automatic welding.

**Welded anchor metal
Type A**

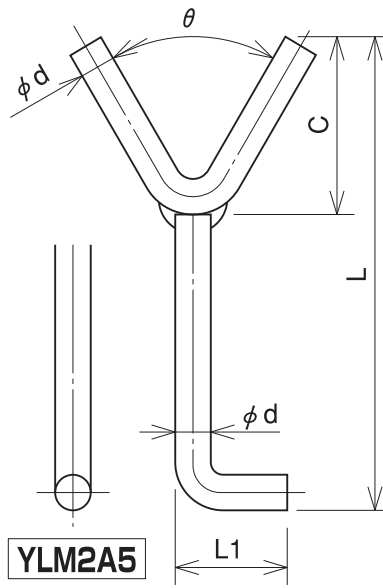
YM2A. YM2AR. YM2AV

NAMITAKIKO CO., LTD.

Drawing No.

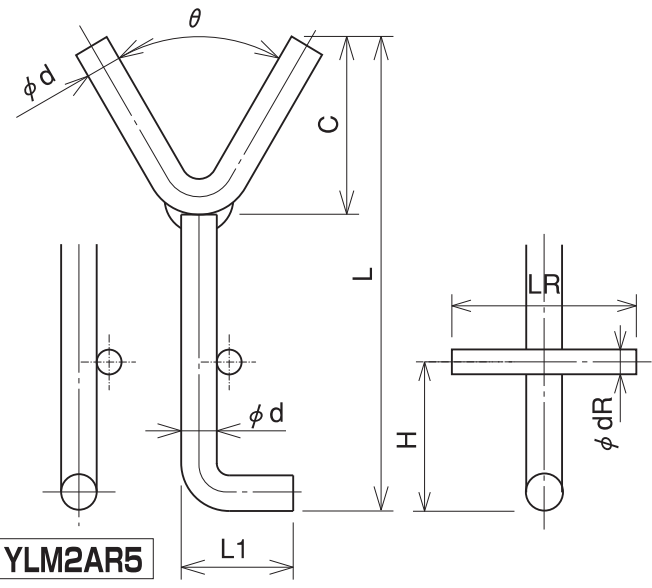
128

YLM2A6



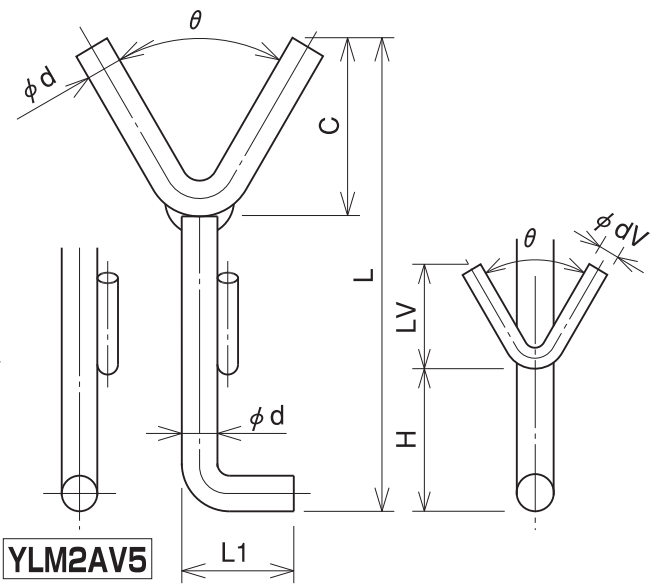
YLM2A5

YLM2AR6



YLM2AR5

YLM2AV6



YLM2AV5

YLM2A5	Type indication	θ -YLM2A5- ϕd -C-L-L1
YLM2A6	Type indication	θ -YLM2A6- ϕd -C-L-L1

YLM2AR5	Type indication	θ -YLM2AR5- ϕd -C-L-L1- ϕdR -LR-H
YLM2AR6	Type indication	θ -YLM2AR6- ϕd -C-L-L1- ϕdR -LR-H

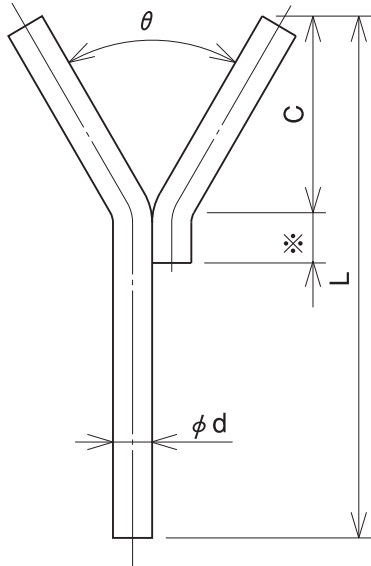
YLM2AV5	Type indication	θ -YLM2AV5- ϕd -C-L-L1- θ - ϕdV -LV-H
YLM2AV6	Type indication	θ -YLM2AV6- ϕd -C-L-L1- θ - ϕdV -LV-H

Example of description: 60-YLM2A6-10-50-100-40... L1 is more than three times (if not specified, three times ϕd)

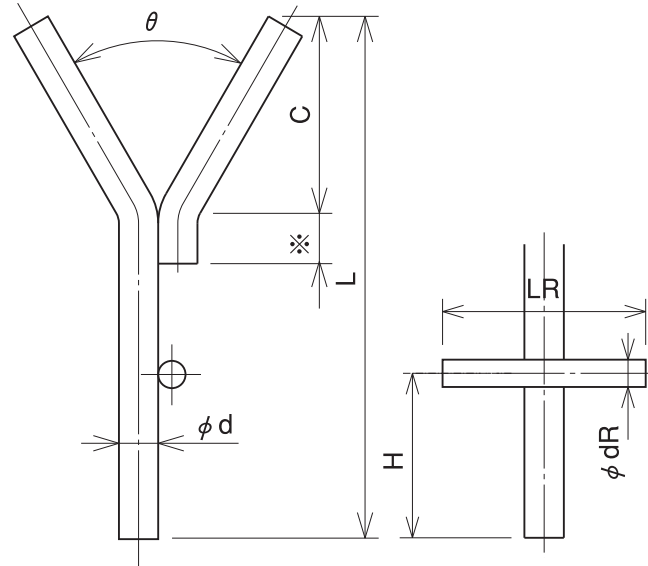
The "5" at the end of each product name indicates that the bending direction of the leg is at the right angle toward Y.
 The "6" at the end of each product name indicates that the bending direction of the leg is parallel toward Y
 (as shown in this drawing).

Welded anchor metal Type A YLM2A. YLM2AR. YLM2AV	Drawing No.
	129
	NAMITAKIKO CO., LTD.

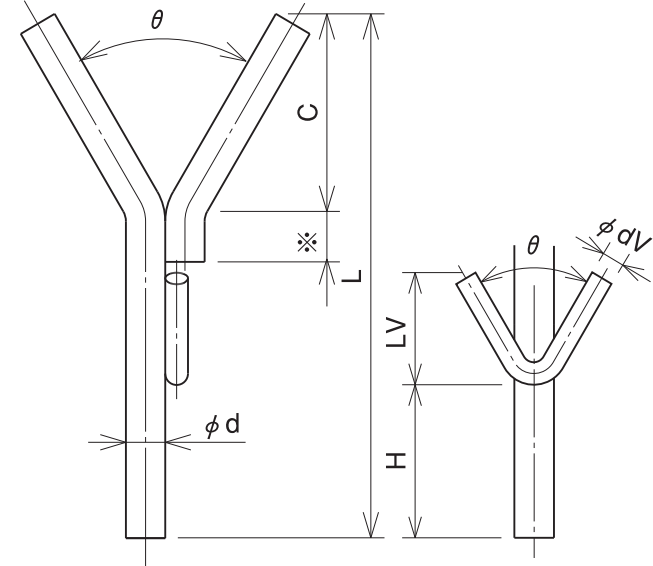
YM2B



YM2BR



YM2BV



YM2B	Type indication	θ -YM2B- ϕd -C-※-L
YM2BF	Type indication	θ -YM2BF- ϕd -C-※-L

YM2BR	Type indication	θ -YM2BR- ϕd -C-※-L- ϕdR -LR-H
YM2BRF	Type indication	θ -YM2BRF- ϕd -C-※-L- ϕdR -LR-H

YM2BV	Type indication	θ -YM2BV- ϕd -C-※-L- θ - ϕdV -LV-H
YM2BVF	Type indication	θ -YM2BVF- ϕd -C-※-L- θ - ϕdV -LV-H

Example of description: 60-YM2BF-10-50-100... The "F" at the end of each product name indicates flux processing of automatic welding.
The "※" mark indicates an overlap space (if not specified, 1.5 times ϕd).

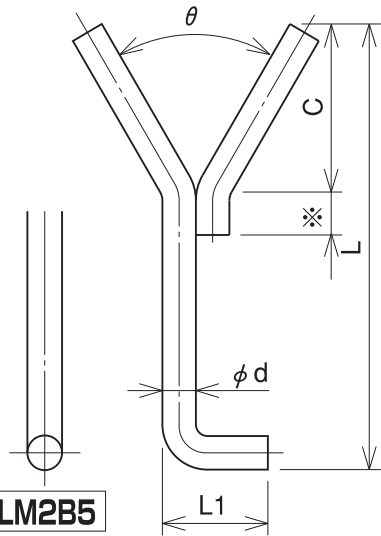
**Welded anchor metal
Type B**

YM2B. YM2BR. YM2BV

NAMITAKIKO CO., LTD.

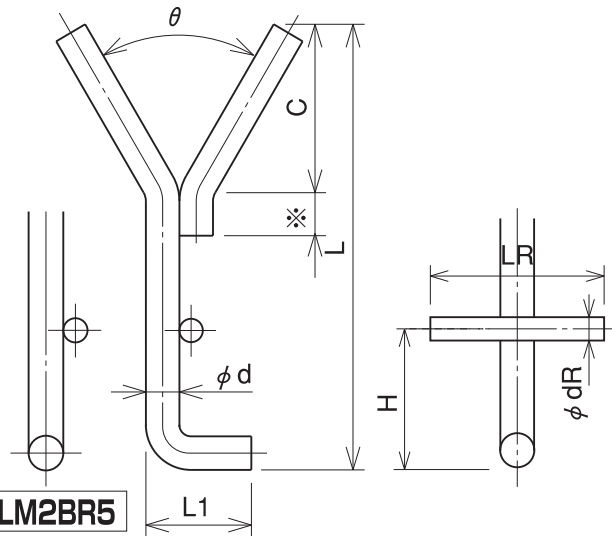
Drawing No.
130

YLM2B6



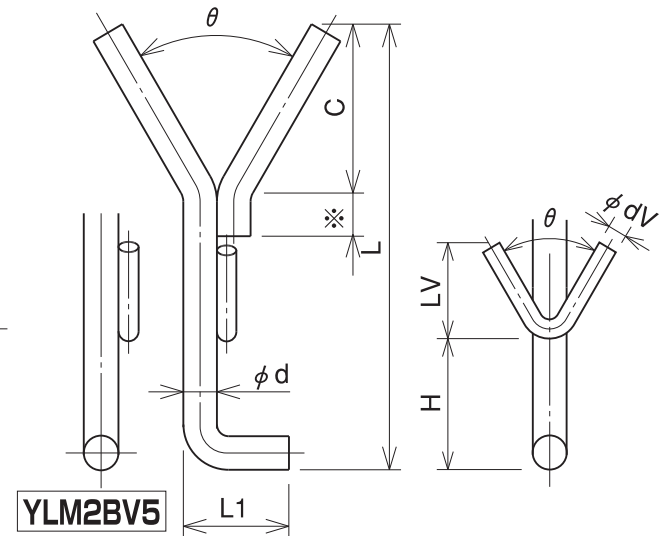
YLM2B5

YLM2BR6



YLM2BR5

YLM2BV6



YLM2BV5

YLM2B5	Type indication	θ -YLM2B5- ϕd -C-※-L-L1
YLM2B6	Type indication	θ -YLM2B6- ϕd -C-※-L-L1

YLM2BR5	Type indication	θ -YLM2BR5- ϕd -C-※-L-L1- ϕdR -LR-H
YLM2BR6	Type indication	θ -YLM2BR6- ϕd -C-※-L-L1- ϕdR -LR-H

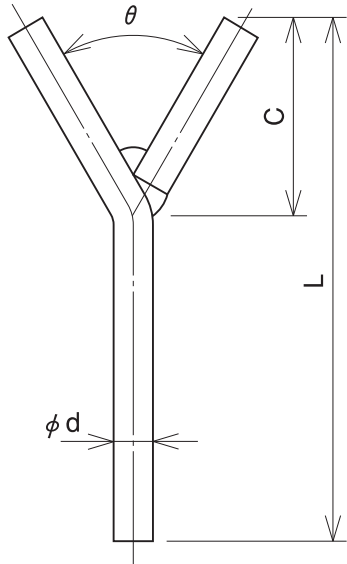
YLM2BV5	Type indication	θ -YLM2BV5- ϕd -C-※-L-L1- θ - ϕdV -LV-H
YLM2BV6	Type indication	θ -YLM2BV6- ϕd -C-※-L-L1- θ - ϕdV -LV-H

The "※" mark indicates an overlap space (if not specified, 1.5 times ϕd).

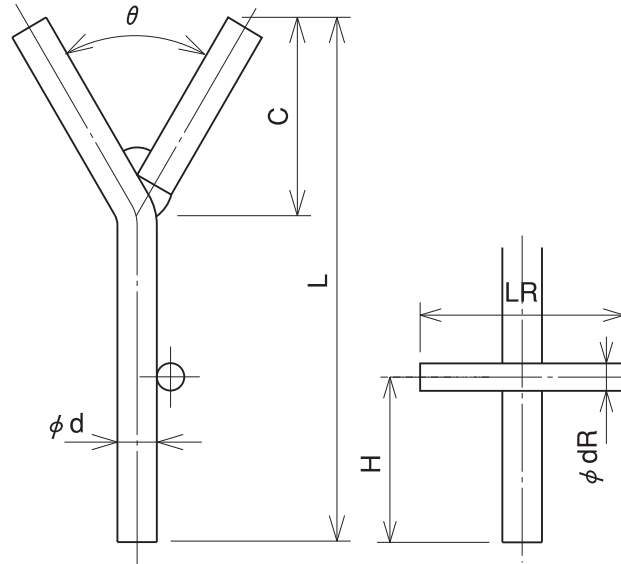
Example of description: 60-YLM2B6-10-50-100-40... L1 is more than three times ϕd (if not specified, three times ϕd).
 The "5" at the end of each product name indicates that the bending direction of the leg is at the right angle toward Y.
 The "6" at the end of each product name indicates that the bending direction of the leg is parallel toward Y
 (as shown in this drawing).

Welded anchor metal Type B	Drawing No. 131
YLM2B. YLM2BR. YLM2BV	
NAMITAKIKO CO., LTD.	

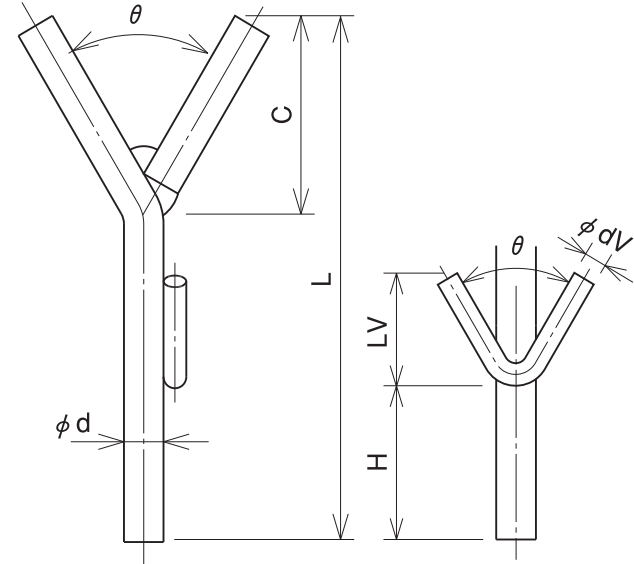
YM2C



YM2CR



YM2CV



YM2C	Type indication	θ -YM2C- ϕd -C-L
YM2CF	Type indication	θ -YM2CF- ϕd -C-L

YM2CR	Type indication	θ -YM2CR- ϕd -C-L- ϕdR -LR-H
YM2CRF	Type indication	θ -YM2CRF- ϕd -C-L- ϕdR -LR-H

YM2CV	Type indication	θ -YM2CV- ϕd -C-L- θ - ϕdV -LV-H
YM2CVF	Type indication	θ -YM2CVF- ϕd -C-L- θ - ϕdV -LV-H

Example of description: 60-YM2CF-10-50-100...

The "F" at the end of each product name indicates flux processing of automatic welding.

**Welded anchor metal
Type C**

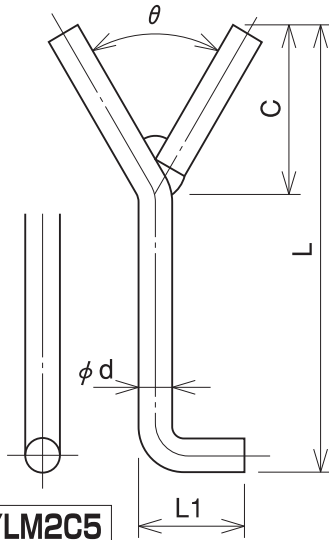
YM2C. YM2CR. YM2CV

NAMITAKIKO CO., LTD.

Drawing No.

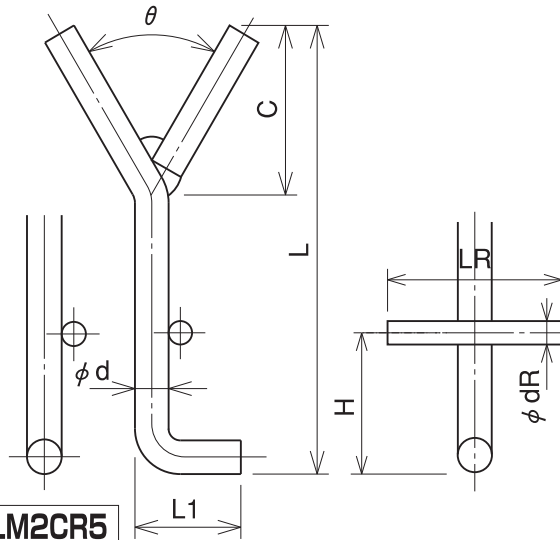
132

YLM2C6



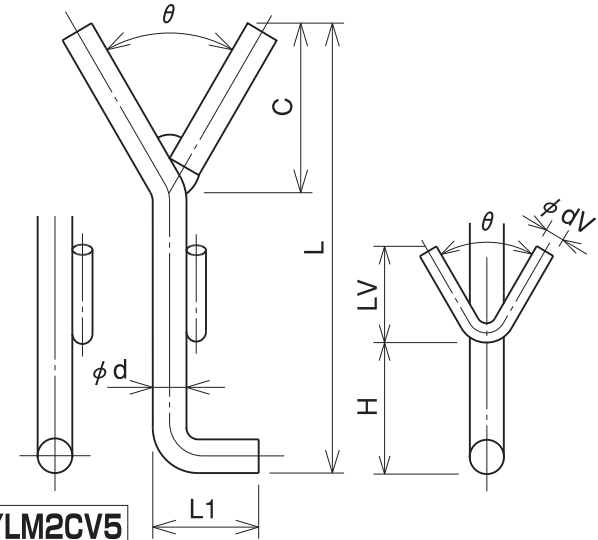
YLM2C5

YLM2CR6



YLM2CR5

YLM2CV6



YLM2CV5

YLM2C5	Type indication	θ -YLM2C5- ϕd -C-L-L1
YLM2C6	Type indication	θ -YLM2C6- ϕd -C-L-L1

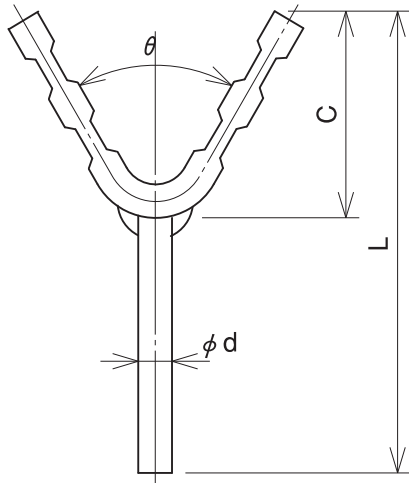
YLM2CR5	Type indication	θ -YLM2CR5- ϕd -C-L-L1- ϕdR -LR-H
YLM2CR6	Type indication	θ -YLM2CR6- ϕd -C-L-L1- ϕdR -LR-H

YLM2CV5	Type indication	θ -YLM2CV5- ϕd -C-L-L1- θ - ϕdV -LV-H
YLM2CV6	Type indication	θ -YLM2CV6- ϕd -C-L-L1- θ - ϕdV -LV-H

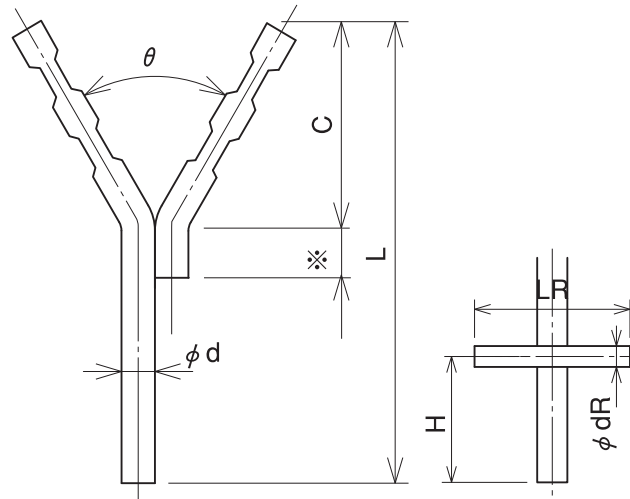
Example of description: 60-YLM2C6-10-50-100-40... L1 is more than three times ϕd (if not specified, three times ϕd).
 The "5" at the end of each product name indicates that the bending direction of the leg is at the right angle toward Y.
 The "6" at the end of each product name indicates that the bending direction of the leg is parallel toward Y
 (as shown in this drawing).

Welded anchor metal	Drawing No.
Type C	133
YLM2C. YLM2CR. YLM2CV	
NAMITAKIKO CO.,LTD.	

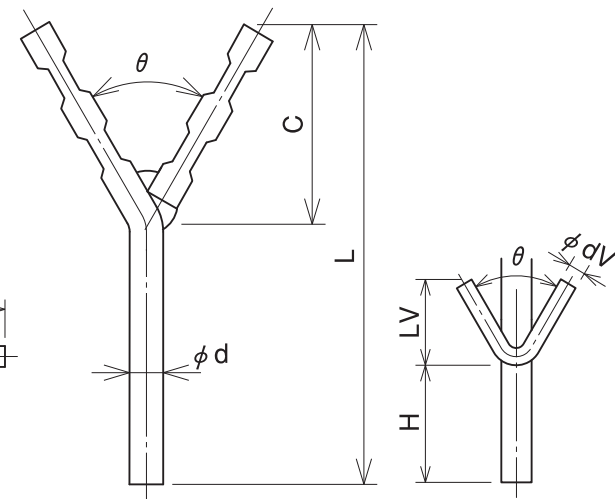
YM3A



YM3B



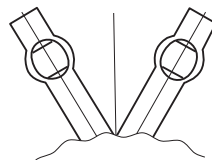
YM3C



Line diam.	No. of corrugations for the C size		
	54 or under	55 or more	60 or more
8	1	2	2
9	1	2	2
10	1	2	2
12	1	1	2
13	1	1	2
14	1	1	2
16	1	1	2

Example of description: 60-YM3B-10-50-20-100
 The "*" mark indicates an overlap space
 (if not specified, 1.5 times ϕd).

YM3A	Type indication	θ -YM3A- ϕd -C-L
YM3B	Type indication	θ -YM3B- ϕd -C-*L
YM3C	Type indication	θ -YM3C- ϕd -C-L



When the C size is smaller, the corrugation direction could be in the direction shown in this drawing.

Line diam.	C size
$\phi 10$ or under	35 or smaller
$\phi 12$ or more	40 or smaller

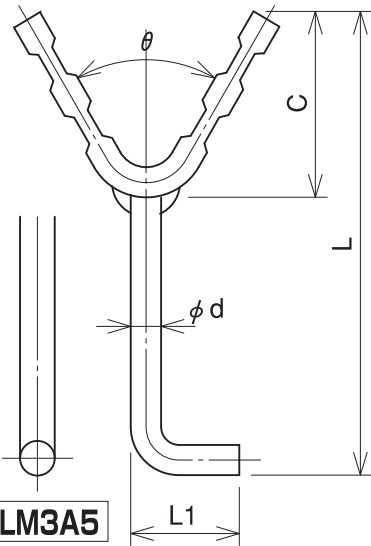
**Welded anchor metal (corrugated)
 Type A, B, and C**

YM3A. YM3B. YM3C

Drawing No.
134

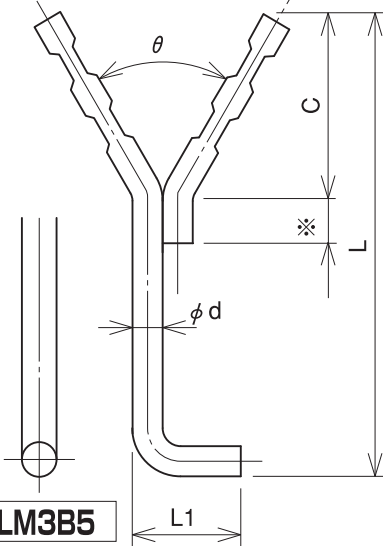
NAMITAKIKO CO., LTD.

YLM3A6



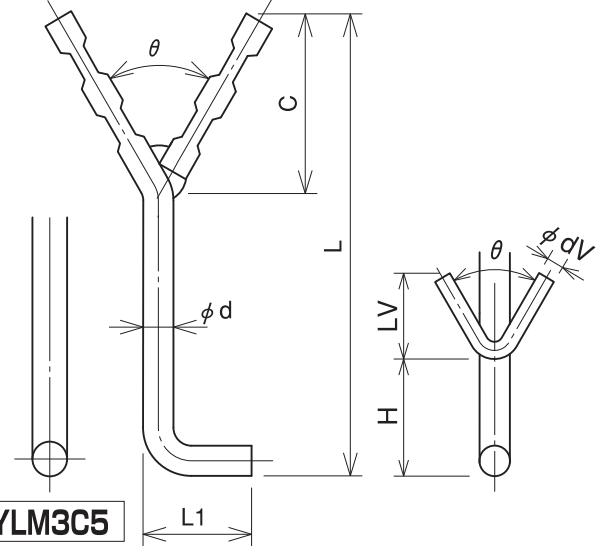
YLM3A5

YLM3B6

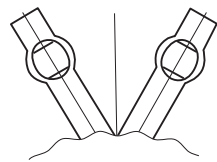


YLM3B5

YLM3C6



YLM3C5



When the C size is smaller, the corrugation direction could be in the direction shown in this drawing.

Line diam.	C size
φ10 or under	35 or smaller
φ12 or more	40 or smaller

Line diam.	No. of corrugations for the C size		
	54 or under	55 or more	60 or more
8	1	2	2
9	1	2	2
10	1	2	2
12	1	1	2
13	1	1	2
14	1	1	2
16	1	1	2

YLM3A5	Type indication	θ -YLM3A5- ϕd -C-L-L1
YLM3A6	Type indication	θ -YLM3A6- ϕd -C-L-L1
YLM3B5	Type indication	θ -YLM3B5- ϕd -C-※-L-L1
YLM3B6	Type indication	θ -YLM3B6- ϕd -C-※-L-L1
YLM3C5	Type indication	θ -YLM3C5- ϕd -C-L-L1
YLM3C6	Type indication	θ -YLM3C6- ϕd -C-L-L1

L1 is more than three times φd (if not specified, three times φd).
 The "5" at the end of each product name indicates that the bending direction of the leg is at the right angle toward Y.
 The "6" at the end of each product name indicates that the bending direction of the leg is parallel toward Y (as shown in this drawing).

Welded anchor metal (corrugated)
Type A, B, and C

Drawing No.
135

YLM3A. YLM3B. YLM3C

NAMITAKIKO CO., LTD.