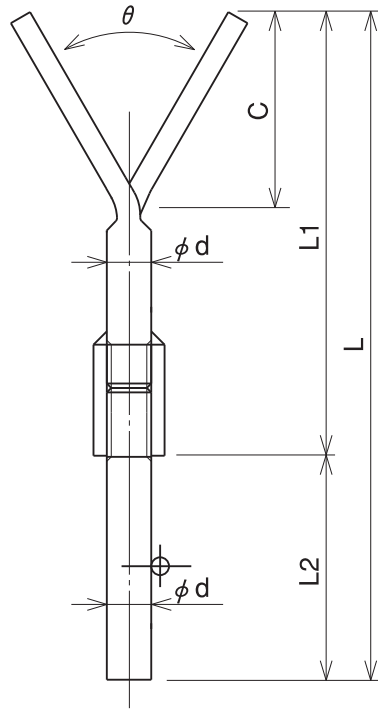
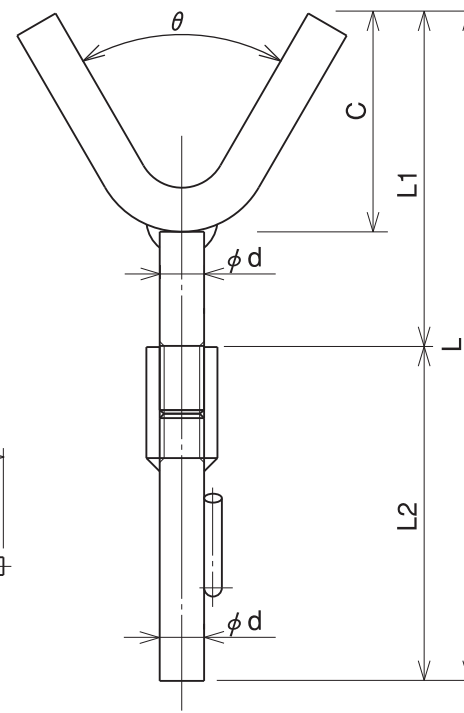


W5U  
WW



W4WU  
WSLR



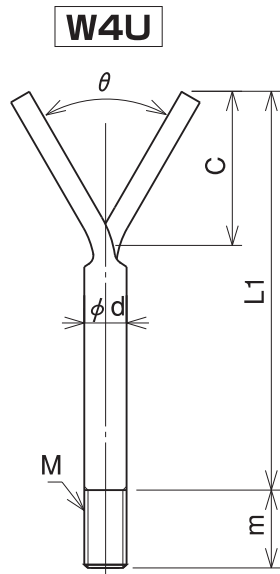
W2AU  
WWV

This drawing shows an example of combinations of the upper part and the lower part of two-stage anchor metal.  
Please select your preferable combinations by using each material for the upper part and the lower part shown in other drawings.

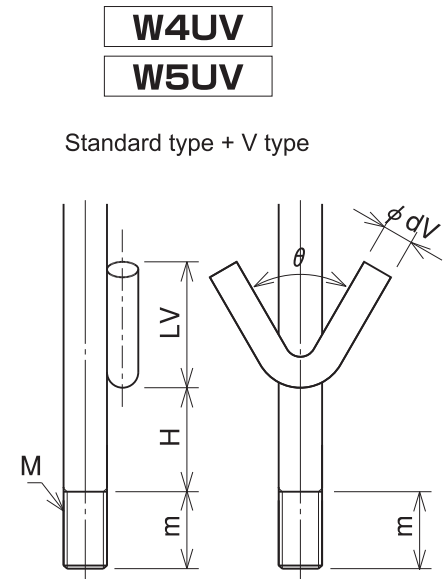
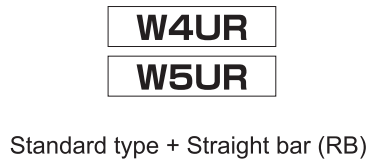
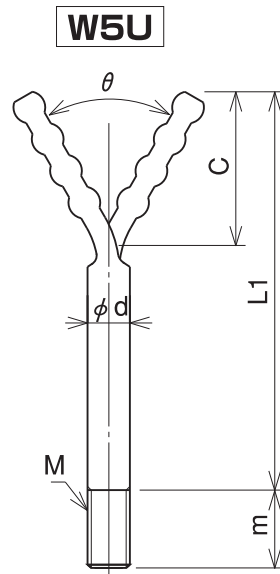
Two-stage anchor metal  
assembly drawing  
Namita type

Drawing No.  
136

NAMITAKIKO CO.,LTD.



Standard type



W4U Type indication  $\theta$ -W4U- $\phi$ d-C-L1-M-m

W5U Type indication  $\theta$ -W5U- $\phi$ d-C-L1-M-m

Example of description: 60-W5U-10-50-100-M10-15

W4UR Type indication  $\theta$ -W4UR- $\phi$ d-C-L1-M-m- $\phi$ dR-LR-H  
 W5UR Type indication  $\theta$ -W5UR- $\phi$ d-C-L1-M-m- $\phi$ dR-LR-H

W4UV Type indication  $\theta$ -W4UV- $\phi$ d-C-L1-M-m- $\theta$ - $\phi$ dV-LV-H  
 W5UV Type indication  $\theta$ -W5UV- $\phi$ d-C-L1-M-m- $\theta$ - $\phi$ dV-LV-H

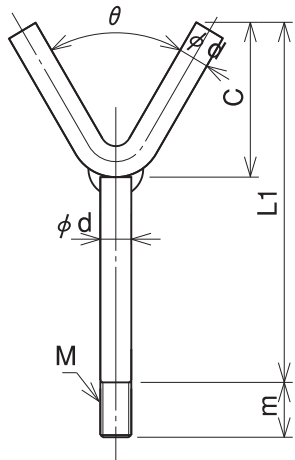
$\phi$ d	L1 (W4U,W5U)	M	m
$\phi$ 8	Min. 45	M8	12
$\phi$ 10	Min. 55	M10	15
$\phi$ 12	Min. 60	M12	18
$\phi$ 14	Min. 70	M14	21
$\phi$ 16	Min. 80	M16	24

Please select your preferable combinations by using each material for the lower part shown in other drawings.

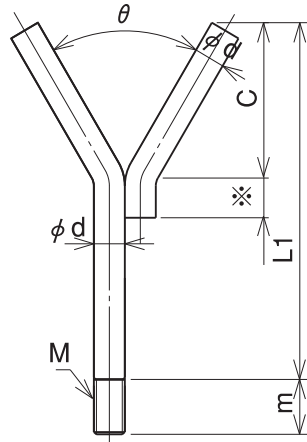
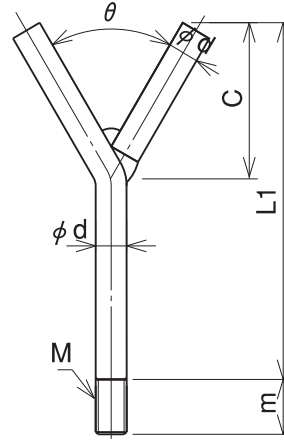
Two-stage anchor metal Upper (U)  
 Cast type Namita type  
 W4U, W4UR, W4UV  
 W5U, W5UR, W5UV

Drawing No.  
 137

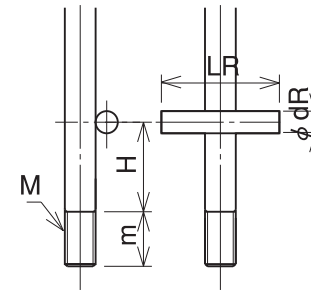
NAMITAKIKO CO., LTD.

**W2AU****W2BU**

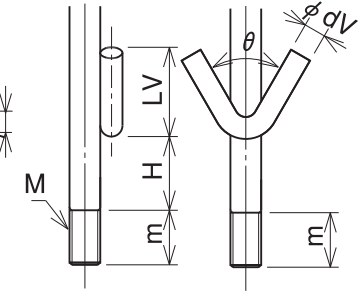
Standard type

**W2CU****W2AUR****W2BUR****W2CUR**

Standard type + Straight bar (RB)

**W2AUV****W2BUV****W2CUV**

Standard type + V type

W2AU Type indication  $\theta$ -W2AU- $\phi d$ -C-L1-M-mW2BU Type indication  $\theta$ -W2BU- $\phi d$ -C-※-L1-M-mW2CU Type indication  $\theta$ -W2CU- $\phi d$ -C-L1-M-m

Example of description: 60-W2BU-10-50-20-M10-15

$\phi d$	L1 (W2AU,W2CU)	L1 (W2BU)	M	m
$\phi 8$	Min. 45	Min. 45	M8	12
$\phi 10$	Min. 45	Min. 45	M10	15
$\phi 12$	Min. 50	Min. 50	M12	18
$\phi 14$	Min. 60	Min. 70	M14	21
$\phi 16$	Min. 60	Min. 70	M16	24

Please select your preferable combinations by using each material for the lower part shown in other drawings.

W2AUR	Type indication	$\theta$ -W2AUR- $\phi d$ -C-L1-M-m- $\phi dR$ -LR-H
W2BUR	Type indication	$\theta$ -W2BUR- $\phi d$ -C-※-L1-M-m- $\phi dR$ -LR-H
W2CUR	Type indication	$\theta$ -W2CUR- $\phi d$ -C-L1-M-m- $\phi dR$ -LR-H
W2AUV	Type indication	$\theta$ -W2AUV- $\phi d$ -C-L1-M-m- $\theta$ - $\phi dV$ -LV-H
W2BUV	Type indication	$\theta$ -W2BUV- $\phi d$ -C-※-L1-M-m- $\theta$ - $\phi dV$ -LV-H
W2CUV	Type indication	$\theta$ -W2CUV- $\phi d$ -C-L1-M-m- $\theta$ - $\phi dV$ -LV-H

The "※" mark indicates an overlap space (if not specified, 1.5 times  $\phi d$ ).

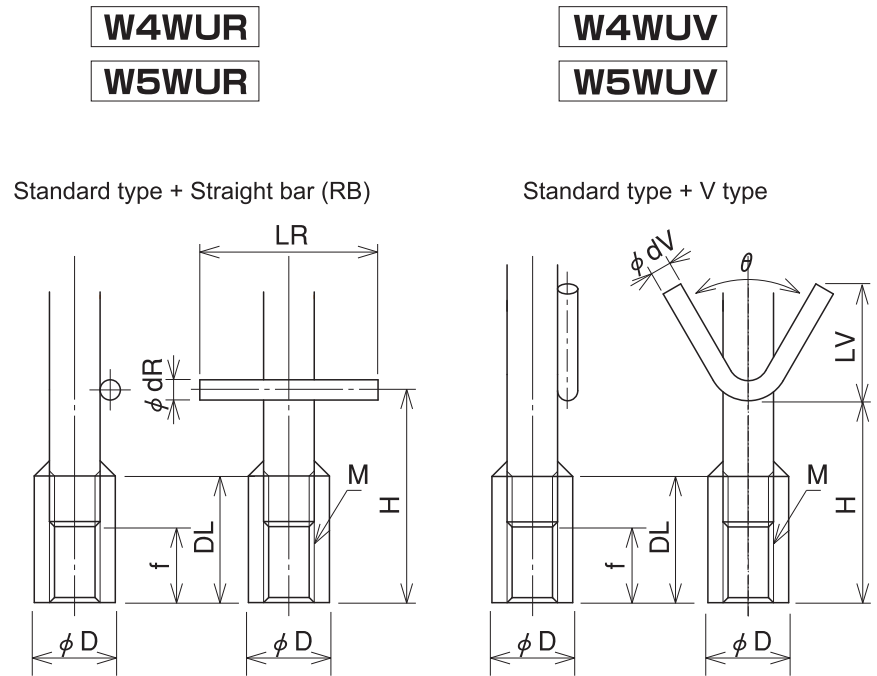
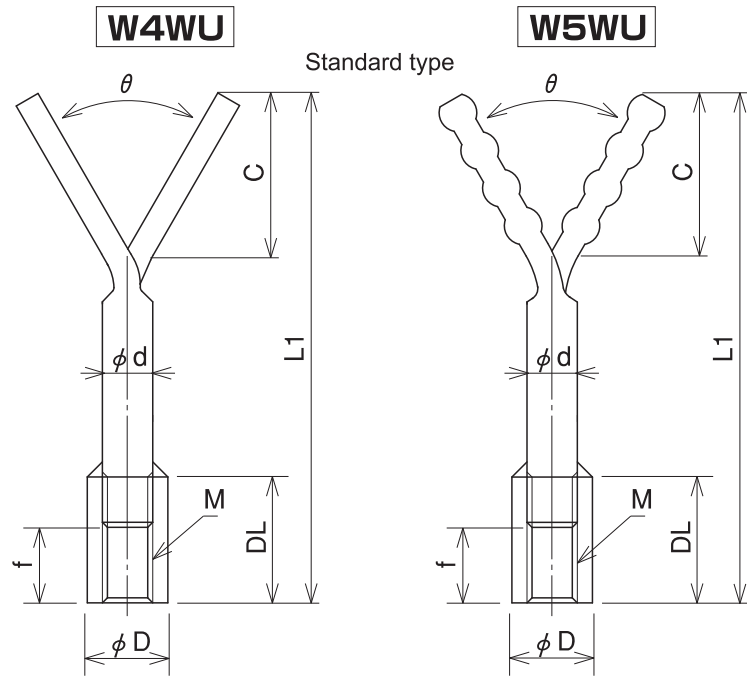
**Two-stage anchor metal upper (U)**  
**Welded type**

W2AU. W2AUR. W2AUV  
W2BU. W2BUR. W2BUV  
W2CU. W2CUR. W2CUV

Drawing No.

138

NAMITAKIKO CO., LTD.



W4SU    Type indication     $\theta$ -W4SU- $\phi$ d-C-L1-M-f    W5SU    Type indication     $\theta$ -W5SU- $\phi$ d-C-L1-M-f

Example of description: 60-W4WU-10-50-20-M10-15

$\phi$ d	L1 (W4WU,W5WU)	$\phi$ D	f	M	DL
$\phi$ 8	Min. 45	$\phi$ 12	12	M8	20
$\phi$ 10	Min. 63	$\phi$ 16	15	M10	25
$\phi$ 12	Min. 74	$\phi$ 20	18	M12	30
$\phi$ 14	Min. 85	$\phi$ 22	21	M14	35
$\phi$ 16	Min. 102	$\phi$ 24	24	M16	40

W4WUR    Type indication     $\theta$ -W4WUR- $\phi$ d-C-L1-M-f- $\phi$ dR-LR-H  
W5WUR    Type indication     $\theta$ -W5WUR- $\phi$ d-C-L1-M-f- $\phi$ dR-LR-H

W4WUV    Type indication     $\theta$ -W4WUV- $\phi$ d-C-L1-M-f- $\theta$ - $\phi$ dV-LV-H  
W5WUV    Type indication     $\theta$ -W5WUV- $\phi$ d-C-L1-M-f- $\theta$ - $\phi$ dV-LV-H

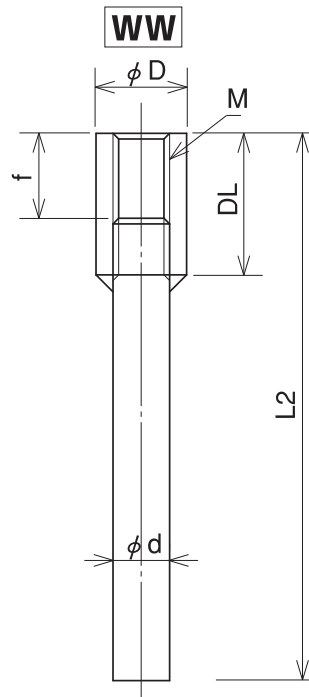
**Two-stage anchor metal upper (U)  
Namita type**

W4WU, W4WUR, W4WUV  
W5WU, W5WUR, W5WUV

Drawing No.  
139

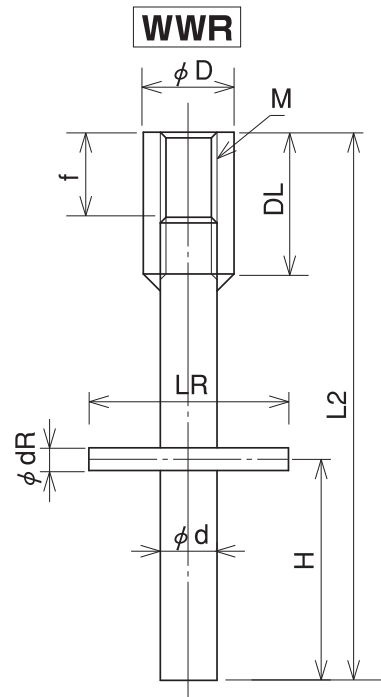
Please select your preferable combinations by using each material for the lower part shown in other drawings.

NAMITAKIKO CO., LTD.



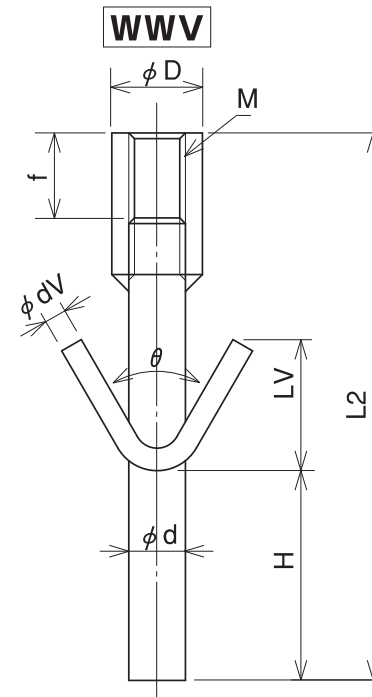
Standard type

WW	Type indication	WW-φd-L2-M-f
WWF	Type indication	WWF-φd-L2-M-f



Standard type + Straight bar (RB)

WWR	Type indication	WWR-φd-L2-M-f-φdR-LR-H
WWRF	Type indication	WWRF-φd-L2-M-f-φdR-LR-H



Standard type + V type

WWV	Type indication	WWV-φd-L2-M-f-θ-φdV-LV-H
WWVF	Type indication	WWVF-φd-L2-M-f-θ-φdV-LV-H

Example of description: WW-10-100-M10-15

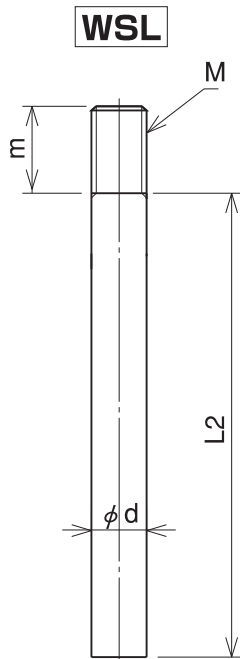
φ d	φ D	f	M	DL
φ 8	φ 12	12	M8	20
φ 10	φ 16	15	M10	25
φ 12	φ 20	18	M12	30
φ 14	φ 22	21	M14	35
φ 16	φ 24	24	M16	40
φ 20	φ 30	30	M20	50

Please select your preferable combinations by using each material for the upper part shown in other drawings.

**Two-stage anchor metal (L)  
Namita type**  
WW. WWR. WWV

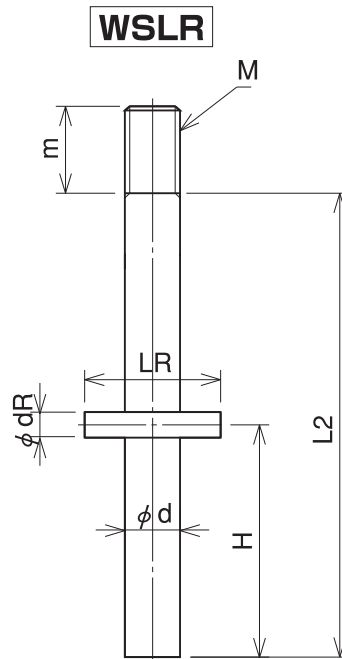
Drawing No.  
140

 NAMITAKIKO CO., LTD.



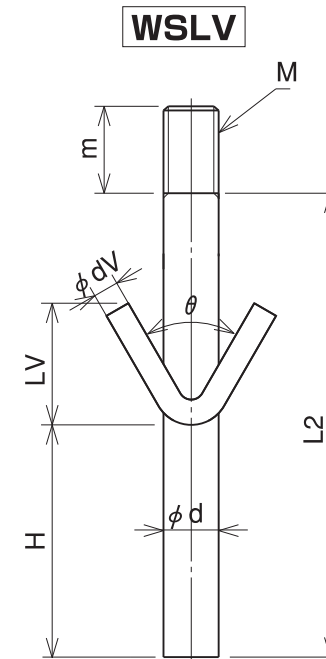
Standard type

WSL	Type indication	WSL- $\phi d$ -L2-M-m
WSLF	Type indication	WSLF- $\phi d$ -L2-M-m



Standard type + Straight bar (RB)

WSLR	Type indication	WSLR- $\phi d$ -L2-M-m- $\phi dR$ -LR-H
WSLRF	Type indication	WSLRF- $\phi d$ -L2-M-m- $\phi dR$ -LR-H



Standard type + V type

WSLV	Type indication	WSLV- $\phi d$ -L2-M-m- $\theta$ - $\phi dV$ -LV-H
WSLVF	Type indication	WSLVF- $\phi d$ -L2-M-m- $\theta$ - $\phi dV$ -LV-H

Example of description: WSLF-10-100-M10-15... The "F" at the end of each product name indicates flux processing of automatic welding.

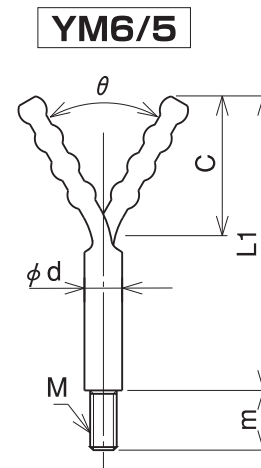
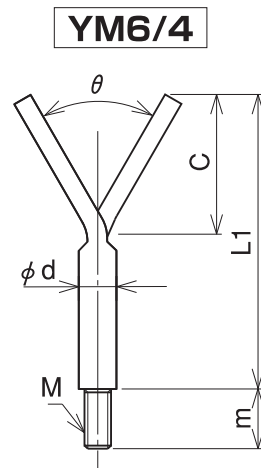
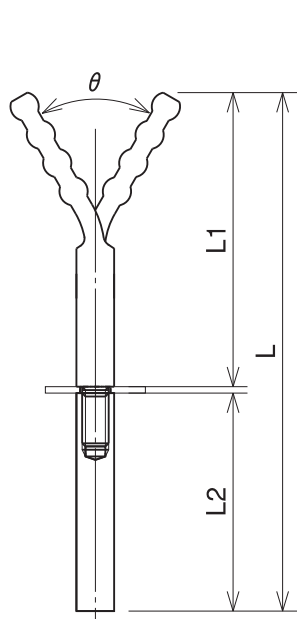
$\phi d$	M	m
$\phi 8$	M8	12
$\phi 10$	M10	15
$\phi 12$	M12	18
$\phi 14$	M14	21
$\phi 16$	M16	24

Please select your preferable combinations by using each material for the upper part shown in other drawings.

**Two-stage anchor metal (L)  
Namita type**  
WSL. WSLR. WSLV

Drawing No.  
141

 NAMITAKIKO CO., LTD.

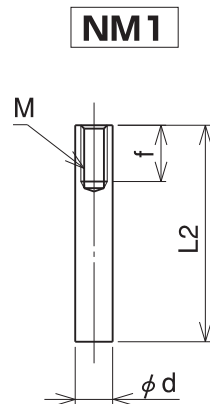


YM6/4 Type indication  $\theta$ YM6/4- $\phi$ d-C-L1-M-m

YM6/5 Type indication  $\theta$ YM6/5- $\phi$ d-C-L1-M-m

Example of description: YM6/4-10-50-100-M10-15

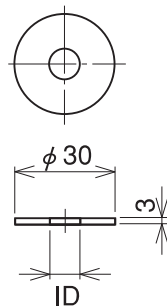
YM6/5  
WM1 is available  
NM1



NM1 Type indication NM1- $\phi$ d-L2-M-f

Example of description: NM-12-100-M8-12

WM1



WM1 Type indication WM1

Standard size	M	f or m	$\phi$ d	WM1 ID
	M8	12	12	10
	M10	15	16	12
	M12	18	20	14
	M14	21	22	16
	M16	24	24	18

Two-stage anchor metal  
(upper and lower)  
YM6/4. YM6/5. NM1. WM1

Drawing No.

142

NAMITAKIKO CO., LTD.