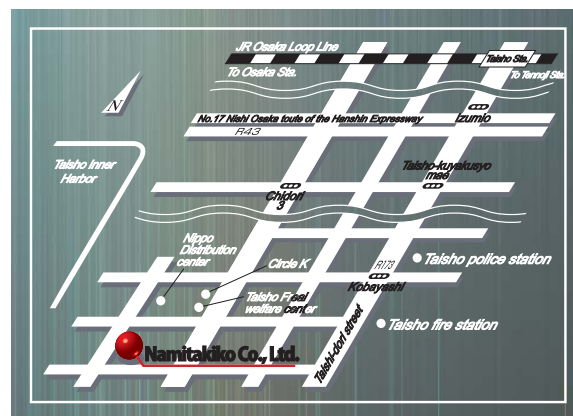


Bag Filtering Retainer



- Headquarters** 1-13-13 Kobayashi-nishi, Taisho-ku, Osaka City 551-0013
TEL: +81 6 6553 0155 / FAX: +81 6 6553 0150
- Main Plant** TEL: +81 6 6551 7421 / FAX: +81 6 6551 7895
(Direct Dial-in)
- Shodoshima Plant** Ko 2305 Kankakedori, Shodoshima-cho, Shozu-gun, Kagawa Pref, 761-4433
TEL: +81 879 82 6331 / FAX: +81 879 82 6332
- Hari Plant** 442 Muyama, Muro-ku, Uda City, Nara Pref. 632-0207
TEL: +81 743 82 1654 / FAX: +81 743 82 1623
- Tokyo Branch Office** Sumitomo Corporation Bldg, 6F, 1-17-10 Kyobashi, Chuo-ku, Tokyo 104-0031
TEL: +81 3 5542 7961 / FAX: +81 3 3555 7963
- Nagoya Branch Office** Matsumoto Daiichi Bldg, 2F, 4-1-12 Kouzoujicho-Kita, Kasugai City, Aichi Pref. 487-0016
TEL: +81 568 29 6740 / FAX: +81 568 29 6741
- Okayama Branch Office** 14-21 Mizushima-aioicho, Kurashiki City, Okayama Pref. 712-8039
TEL: +81 86 436 6671 / FAX: +81 86 436 6672
- Kyushu Branch Office** 72-39 Nishiminato-machi, Kokurakita-ku, Kitakyushu City Fukuoka Pref. 803-0801
TEL: +81 93 482 3445 / FAX: +8193 482 3446



並田タイプのリテーナ Namita's Retainer

A new epoch-making innovation for venturis

Features
1

Two-stage venturi funnel effects

The outside upper diameter of the two-stage venturi is effective for preventing the filter cloth from falling off. Applicable for both attaching methods(with color/without color)of filter cloth.

Features
2

Outside diameter's cuffed edge effects

Substantially enhance the strength by folding back the entire outside diameter to cuffed edge. Avoid the damages such as bending during various works on-site.

Features
3

Notch effects

A notch makes it possible to check the filter cloth attachment condition while the retainer is set. With this notch, the retainer can easily be moved up and down even without using any handle, and it also improves inspection workability.

Features
4

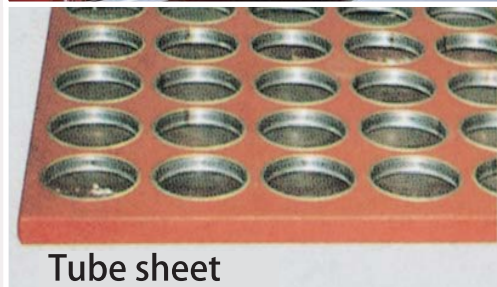
Energy-saving type venturi effects

We developed a venturi having the aim of reducing pressure losses by enlarging an area for absorbing dust with bypass holes installed to locations where venturi effects can be secured with pulse jet.

Features
5

Various upper metal parts

We have a rich product lineup for upper metal parts, by responding to various demands of our customers.



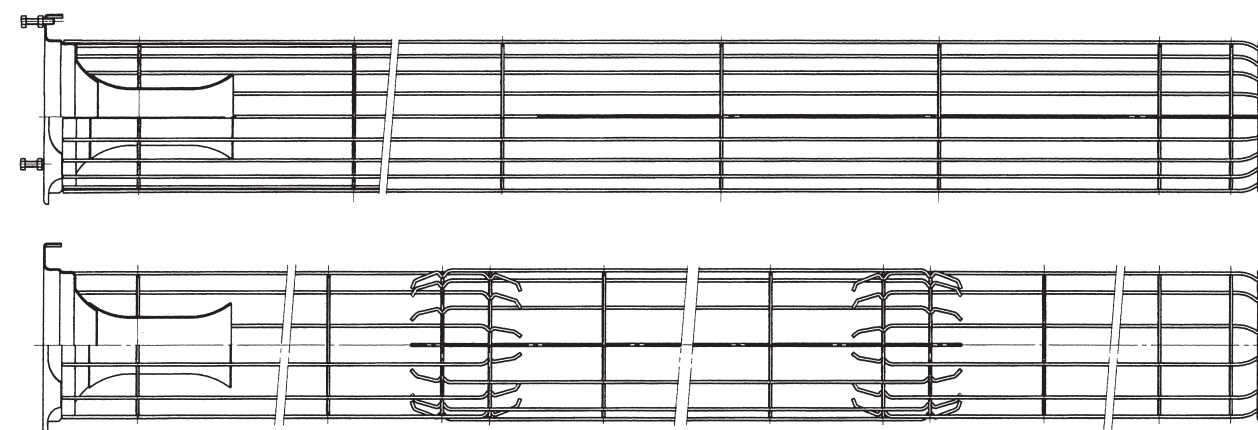
Tube sheet



Retainer producible sizes and specifications

Nominal diam.	Φ 125 system: (Past production record: Cage diameter of Φ 124, Φ 125, Φ 156, etc.) Φ 140 system: (Past production record: Cage diameter of Φ 137, Φ 140, Φ 143, etc.) Φ 150 system: (Past production record: Cage diameter of Φ 148, Φ 150, Φ 152, Φ 154, etc.) Φ 160 system: (Past production record: Cage diameter of Φ 160, etc.) The allowable value in the diameter direction is ± 1mm as the standard.
Length	Retainers up to 7,000mm long are producible. According to our production record, as for separate retainers, we produced a retainer 11,000mm long. The length tolerance is +0 to -10mm as the standard for straight and two-way split retainers, and +0 to -15mm for three-way split retainers.
Line diam.	Diameters of Φ 3.0 and Φ 3.5 are recommended (The one with Φ 4.0 can also be produced).
No. of lines	As for retainers of each nominal diameter, retainers with 8 to 20 vertical lines can be produced.
Ring pitch	As the standard, the length between the bottom plate and the bottom ring is 48mm to 75mm, and the size to the next ring is 75mm. The intermediate ring pitch should be determined according to your demand so that the length between the upper venturi and the top ring can be set within the range of 80mm to 160mm. When you have no particular request for the intermediate ring pitch, the pitch is 1.5 to 2 times the diameter as a guide.
Venturi shape and minimum pitch of tube sheet	The Namita type venturi lineup consists of the Φ 125, Φ 150, and Φ 160 system (The Φ 125 and 150 systems include those retainers with the round upper part). We are also able to produce retainers without venturi pipes. Please feel free to contact us if you would like to get retainers other than the Namita type. <Minimum pitch> Φ 125: P=160; Φ 140: P=185; Φ 150: P=195; Φ 160: P=205
Bottom plate	The Namita type bottom plate that does not damage the filter cloth is used for the retainer of each size. Retainers without bottom plate can also be produced.
Separation	As for retainers in each size, we have produced straight, and two-way, three-way and four-way split retainers.
Adjustment bolt	As for retainers in each size, you can select either of retainers with of without adjustment bolts.

Sample of retainer shape



Shapes of upper metal parts

Type A	Φ 160 · Φ 150 · Φ 125	Type B	Φ 160 · Φ 150 · Φ 125	Type C	Φ 160 · Φ 150 · Φ 140	Type D	Φ 160 · Φ 150 · Φ 140
Type E	Φ 160 Opposite venturi	Type F	Φ 160 Opposite venturi	Type G	Φ 150 Energy-saving	Type H	Φ 150 · Φ 140 (Φ 143) · Φ 125
Type J	Φ 150 · Φ 140 · Φ 125	Type K	Φ 160 · Φ 150 · Φ 125	Type L	Φ 160 · Φ 150 · Φ 125	 Float prevention bar 65A 50A With the current plate installable only to the Φ 140 system.	

We are able to provide the Φ-125 JAF retainer and the bottomless and collar type retainer.

This list shows the press metal molds of major upper metal parts. Retainers can be produced with spatula processing; however, we would like to recommend you to use the above upper metal parts to lower costs. Two kinds of venturi pipe, 50A and 65A, can be produced. Retainers can be replaced with other retainers even in different shapes for the reason of the specifications. Please contact us for more detail information.